



Mobileye Setup Wizard Installation instruction



Table of Contents

<i>TABLE OF CONTENT</i>	2
<i>1 SYSTEM REQUIREMENTS</i>	3
<i>1.1 SOFTWARE DOWNLOAD</i>	3
<i>2 SOFTWARE INSTALLATION PROCEDURE</i>	4
<i>2.1 MOBILEYE SETUP WIZARD</i>	4
<i>3 TROUBLESHOOTING</i>	5
<i>3.1 SOFTWARE INSTALLATION PROBLEM</i>	5
<i>3.2 EYECAN DRIVERS INSTALLATION PROBLEMS</i>	6
<i>4 OFFLINE PROFILE CREATOR (BRIEFCASE)</i>	7
<i>4.1 HOW TO CREATE THE OFFLINE PROFILE</i>	7
<i>5 OFFLINE MODE (OFFLINE BRIEFCASE)</i>	10

Every effort has been made to ensure the accuracy of all information in this User Guide. However, Mobileye Vision Technologies makes no expressed or implied warranty or representation based on the enclosed information.

Mobileye Vision Technologies reserves the rights to alter the equipment specifications and descriptions in this publication without prior notice. Any errors or omissions may be reported to Mobileye Technical Support.

Email: support@mobileye.com

1 System Requirements

- **Supported Operating Systems:** Windows 7, 8 & 10 (32/64bit home/pro).
- **Processor:** Minimum real dual core CPU (no single core with HT). Recommended: Intel Core I3 or stronger
- **Memory:** Minimum: 2GB. Recommended: 4GB or more
- **Hard Drive:** Minimum: 512MB free on Hard disk. Recommended: at least 1GB
- **Internet access is mandatory in order to install the Mobileye system**

NOTE: Please make sure you have Administrator Privileges before installation of the Mobileye Setup Wizard Application and supporting software. If you do not have Administrator Privileges please contact your IT department for assistance.

1.1 Software Download

The newest Mobileye Setup Wizard Application installer and most updated additional required software can always be found at the following FTP link:

<ftp://aftermarketguest@ftplibclient.mobileye.com>

Login details for the FTP:

User: aftermarketguest
Password: MEgu2018@rL

2 Software Installation Procedure

Note: You must be connected to the internet while performing the software Installation

2.1 Mobileye Setup Wizard

- a. Open windows file explorer and copy the ftp link

<ftp://aftermarketguest@ftplient.mobileye.com>

Login with the following details:

Username: aftermarketguest

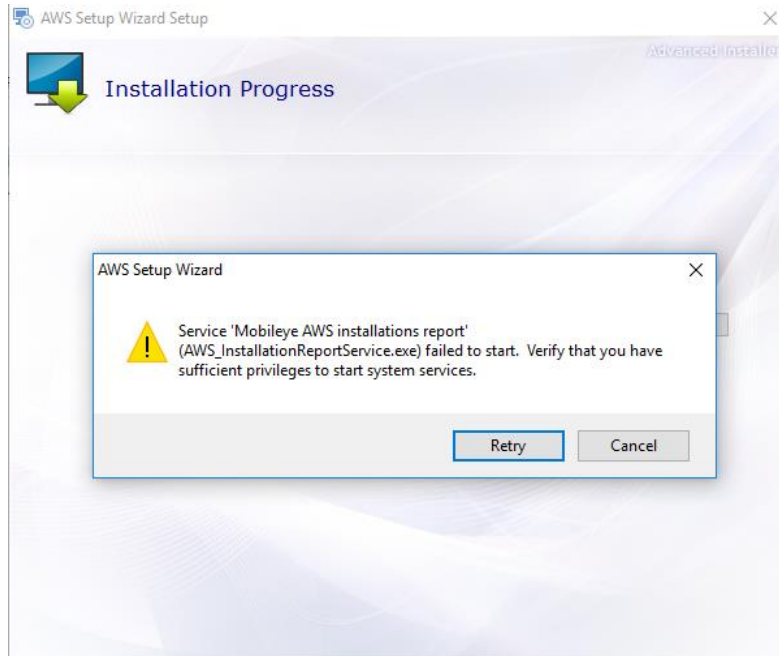
password: MEgu2018@rL

Download the file named "[Mobileye_Setup_Wizard.exe](#)" to your system.

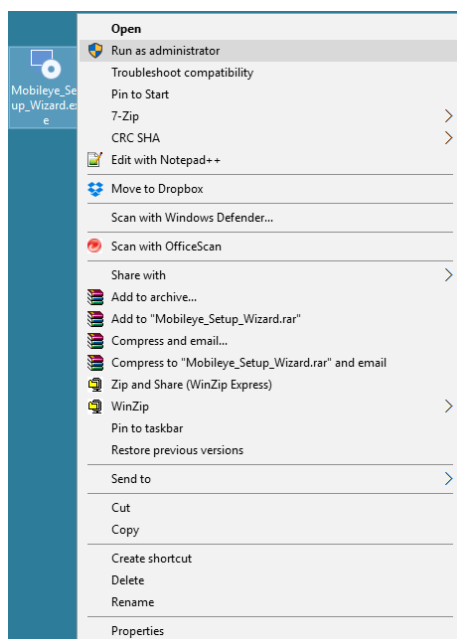
- b. Run the **Mobileye_Setup_Wizard.exe** and install on your system.
- c. During the installation process, ME ToolKit application, CANsee application and EyeCAN drivers will be installed automatically.
- d. Click "Next" during the process and allow any Microsoft security messages regarding drivers.
- e. When installation is complete click the **Mobileye Setup Wizard Icon** (on your desktop).

3 Troubleshooting

3.1 Software installation problem

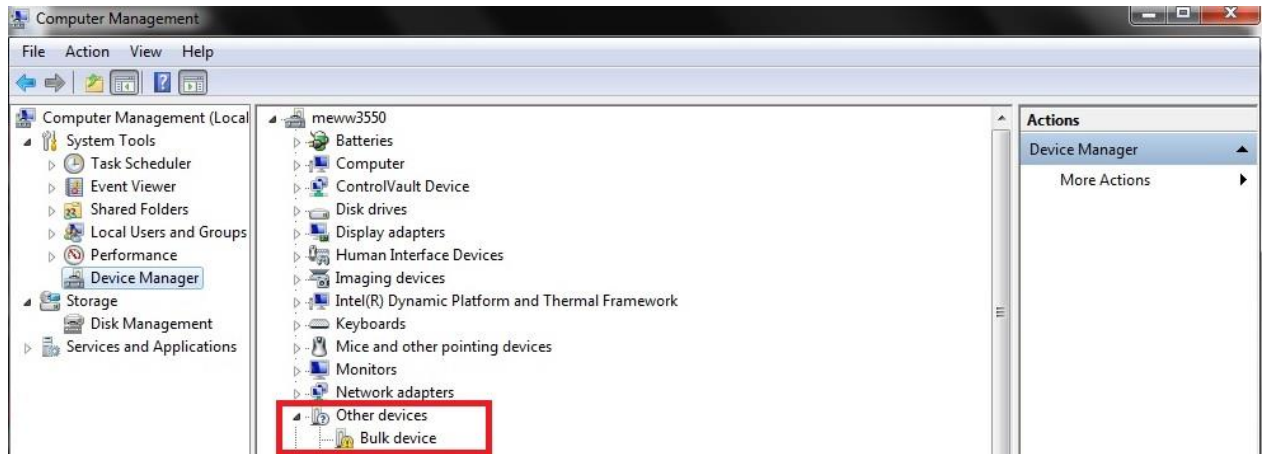


Run the Mobileye setup wizard application as **Administrator** – see image below:



3.2 EyeCAN Drivers installation problems

If EyeCAN driver (Bulk device) was not detected by the operation system, and the warning icon appeared near driver description as shown in the image below:



The solution is to re-install Mobileye Setup Wizard from the very beginning:

1. Uninstall existing Mobileye Setup Wizard application:

Control panel → Programs → Programs and Features

Mobileye AWS Setup Wizard	Mobileye	17/11/2015	5.9.2
	Uninstall	Mobileye	08/09/2015 16.0 MB 2.0.6
	Change	Mobileye	03/11/2015 1.0.2

2. Download and install the Mobileye Setup Wizard as written in the instruction on section 2.1 at page 4 in this document.

4 Offline profile creator (Briefcase)

The Mobileye setup wizard must have internet access in order to login to the application and to download the vehicle profile needed for the installation.

In extreme cases when you do not have internet access, the Mobileye setup wizard can support an offline installation mode.

To work offline, a few condition must be met:

1. Knowing the exact details regarding the vehicle (make, year and model)
2. Knowing the system`s serial number which will be installed in the vehicle
3. Creating the offline profile must be prior to the installation and requires internet connection.

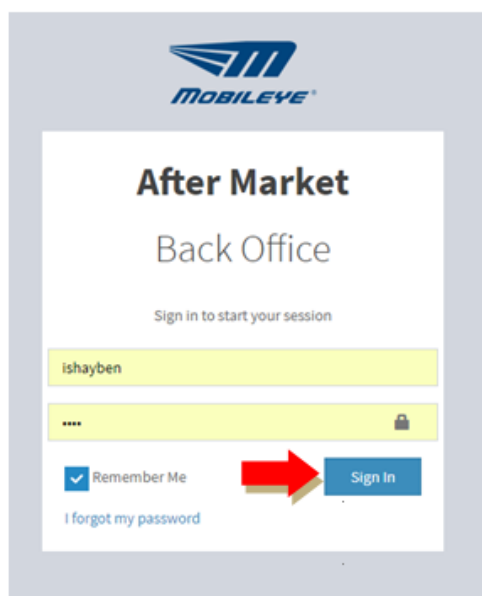
NOTE: the Local Profile feature which was used in previous version of the Mobileye wizard setup is no longer available.

4.1 How to create the offline profile

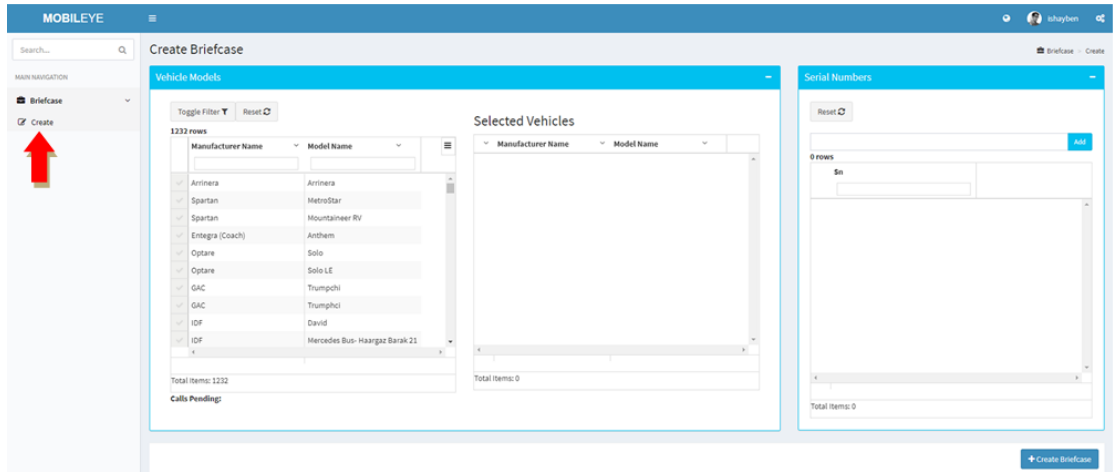
1. Click the link below or copy it to your browser to open Mobileye briefcase page

[Briefcase Creator](#)

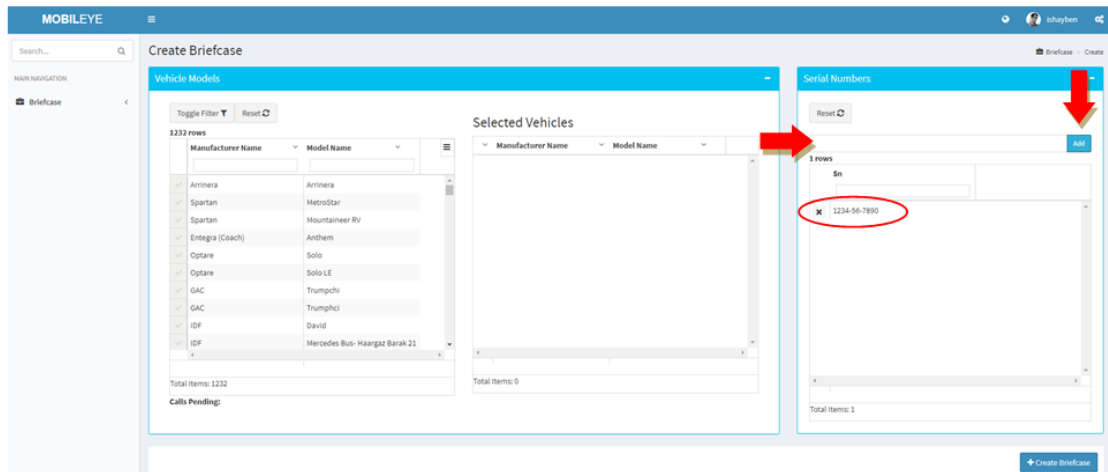
2. Enter your username and password and click "Login" (same login details as for Mobileye Setup Wizard)



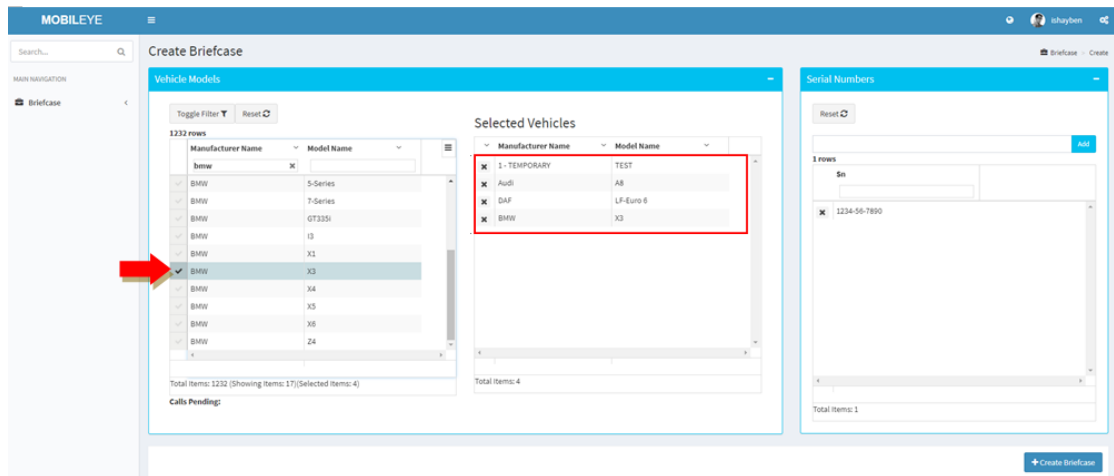
3. Click the "Briefcase" tab and choose the "Create" option



4. Enter the Mobileye system's serial number and click "Add "



5. Choose the Manufacture & Model of the vehicle you are about to install by scrolling down or using the filter field – see image below:
Select the Model you require by marking the V in the relevant check box next to the model name > check the model has been moved the Selected Vehicles Window.



6. Click the **"+Create Briefcase"** button to save and download the offline profile to your local folder.

NOTE:

- You can choose up to 5 different models and 5 different serial numbers per Briefcase file.
- Maximum briefcase files allowed for each user is 5.
- Briefcase files expiration time is 10 days

All of the above may change according to Mobileye discretion.

5 Offline mode (Offline briefcase)

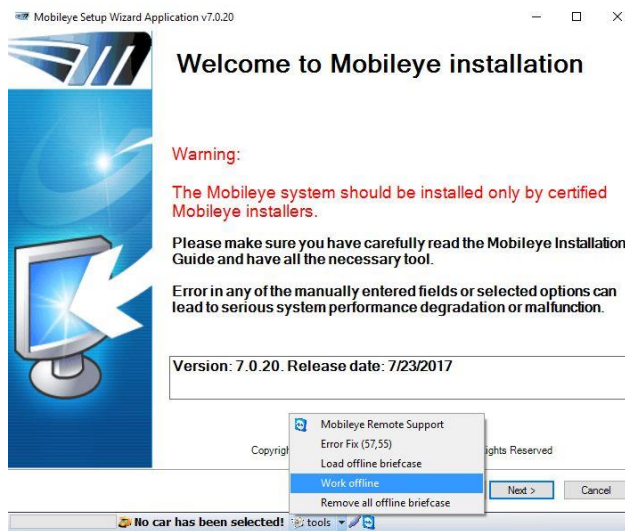
The offline mode assist us with the installation of the Mobileye system when internet access is not available on-site.

Once the Offline Profile (briefcase) file has been created, we need to load it to the Mobileye setup wizard application.

NOTE: The installation process remains with no change.

Please follow the steps below:

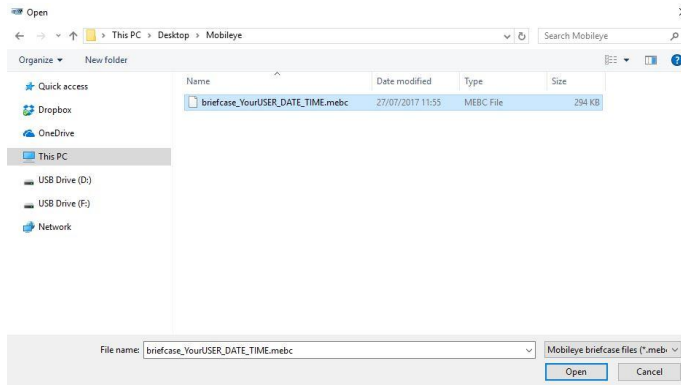
1. Open the Mobileye setup wizard application → **Tools** → **Work offline**



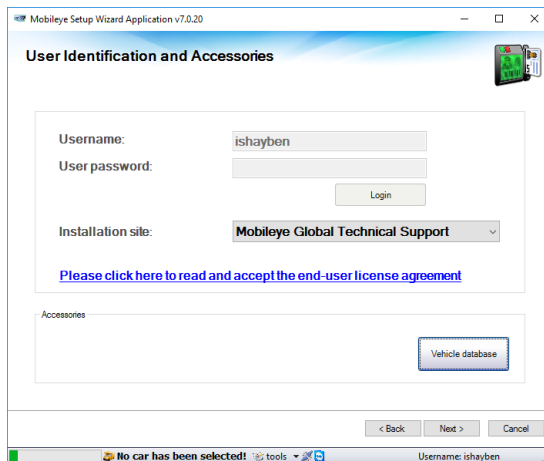
2. Open the Mobileye setup wizard application → **Tools** → **Load offline briefcase**



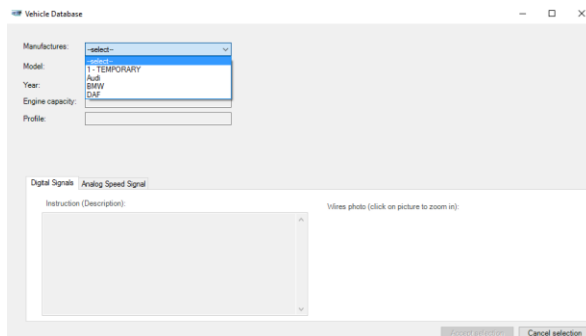
3. Choose the briefcase file located in your computer (which you downloaded before)



4. Enter your login details and choose your working place and click the "Vehicle database" button



5. Choose and verify the vehicle you are about to install from the list (it can be more than 1 if you have uploaded more than 1 briefcase)



6. Continue with the installation as usual