



March 2024

Mobileye 8

Alerts Configuration App - user guide v0.6

Table Of Contents

Table Of Contents	1
1. Introduction	2
2. Accessing the Alert configuration	3
3. Set values!	5
3.1 FCW	6
3.2 LDW	7
3.3 HMW	8
3.4 Volume	10
3.4.1 General volume level	10
3.4.2 LDW volume level	11
3.4.3 HMW volume level	11
3.5 SLI	12
3.6 IHC/Output	13
3.6.1 IHC – Intelligent High Beam Control	13
3.6.2 Output – analog output	14
3.7 Blinker Reminder	17
3.8 System on/off	18
3.9 Pilot mode	18
3.10 Mute by AUX – police mode	19
3.11 Virtual Bumper	19

1. Introduction

The Alerts Configuration app enables easy & quick modification of Mobileye system settings, features` s sensitivity levels and advanced configurations.

The user can lock / limit certain values of the different alerts.

Depending on the existing firmware version, see available alerts configuration features in the table below:

Feature		AWS4 4.18.11_2.4	AWS4 4.19.6_4.4 <i>and up</i>	AWS4 4.19.6_5.x <i>and up</i>	AWS4 4.19.6_5.x <i>and up</i>	AWS4 4.20.5_8.5.x <i>and up</i>
Set FCW sensitivity level		x	✓	✓	✓	✓
LDW	Set sensitivity level	x	✓	✓	✓	✓
	Set volume level	✓		✓	✓	✓
	Set activation speed	✓		✓	✓	✓
HMW	Set sensitivity level	✓	✓	✓	✓	✓
	Set volume level	✓		✓	✓	✓
R-HMW	Set sensitivity level	x	x	✓	✓	✓
Set general volume level		✓	✓	✓	✓	✓
enable/disable SLI / ISA visual alert		✓	✓	✓	✓	✓
Enable/disable IHC and activation speed		x	✓	✓	✓	✓
Set Blinker Reminder alert timing		x	✓	✓	✓	✓
Enable/disable power button		✓	✓	✓	✓	✓
Enable/disable pilot mode		✓	✓	✓	✓	✓
Mute by AUX (police mode)		x	x	✓	✓	✓
Virtual Bumper		x	x	x	✓*	✓*
Analog output (via IHC wire)		x	x	x	x	✓*
Vehicle Information		✓	✓	✓	✓	✓

* Supported with Mobileye IC V8.8.0.0

- When limit any of the available alerts/feature's settings will limit the driver`s ability to change sensitivity and/or volume level within a specific range.
- Not using the alerts configuration application for the Mobileye 8 connect will leave the factory default settings.
- To check the installed firmware version, refer to page 5 @ "Connect to SeeQ" slide.
- IHC (Intelligent High-Beam Control) feature requires physical connection which must be made during the installation process.
For more information about IHC connection step, check the IHC manual which can be found at Mobileye FPT website.

NOTE →

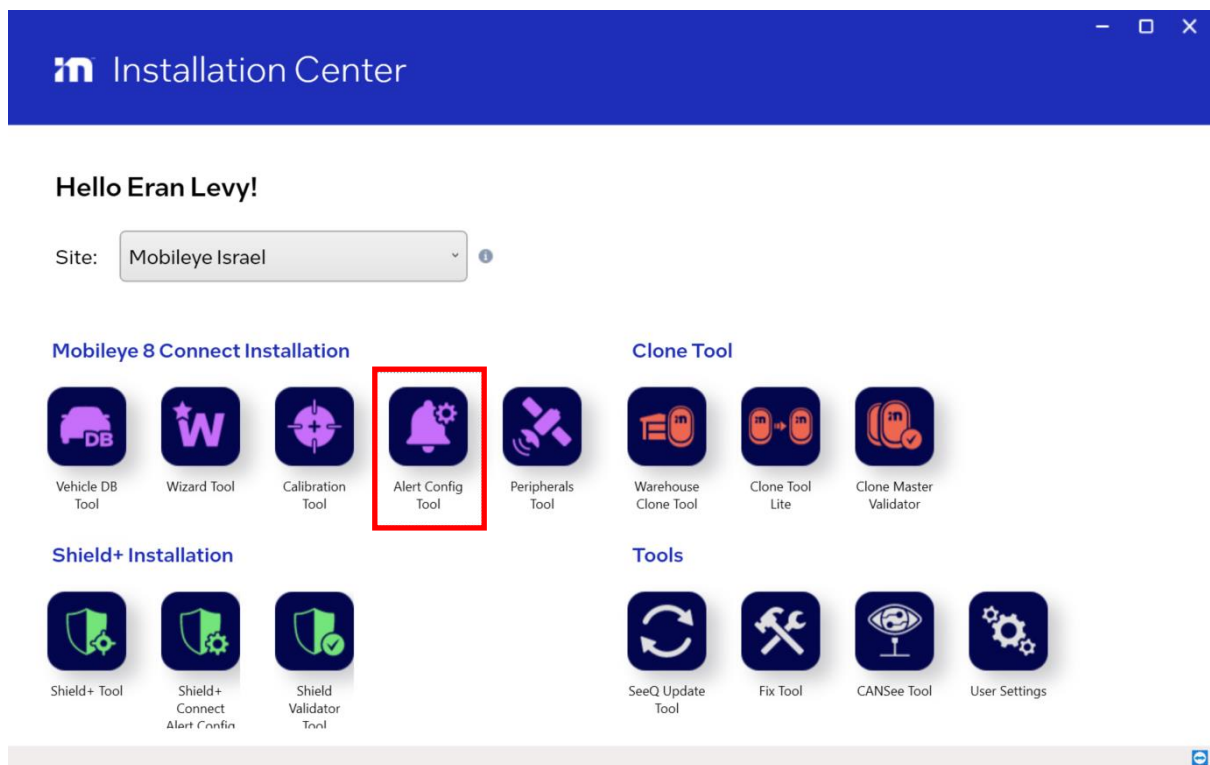
All future Alert configuration app releases will include the latest features.

2. Accessing the Alert configuration

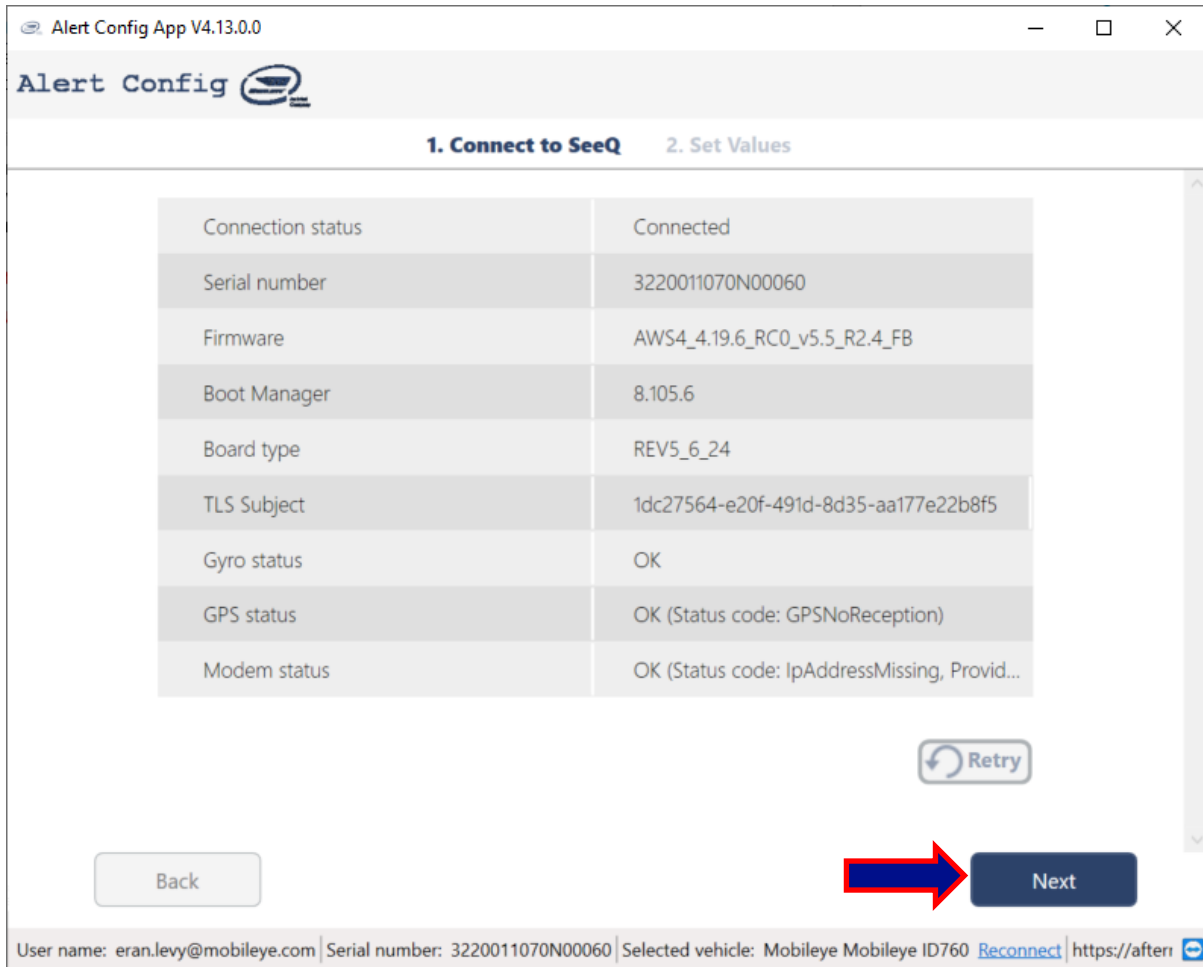
The Alert configuration application is part of the Installation Center (IC).

The application is optimized for a standalone Mobileye 8 connect system or as the master unit as part of the shield Connect/FishEye system.

To run the alerts configuration application, open the Installation Center and click on the icon (as shown in the image below):



Establish communication with the system and click "Next" to continue.




If communication fails, check the following:



- System power status
- EyeNET flex cable connection is connected and stable.
- Ethernet cable is connected between the EyeNET and the ethernet port in the computer.


Click "Reconnect" to re-establish communication and click "Next to continue.


3. Set values!

The Alert configuration application main screen divided to rectangles to separate between the different features.

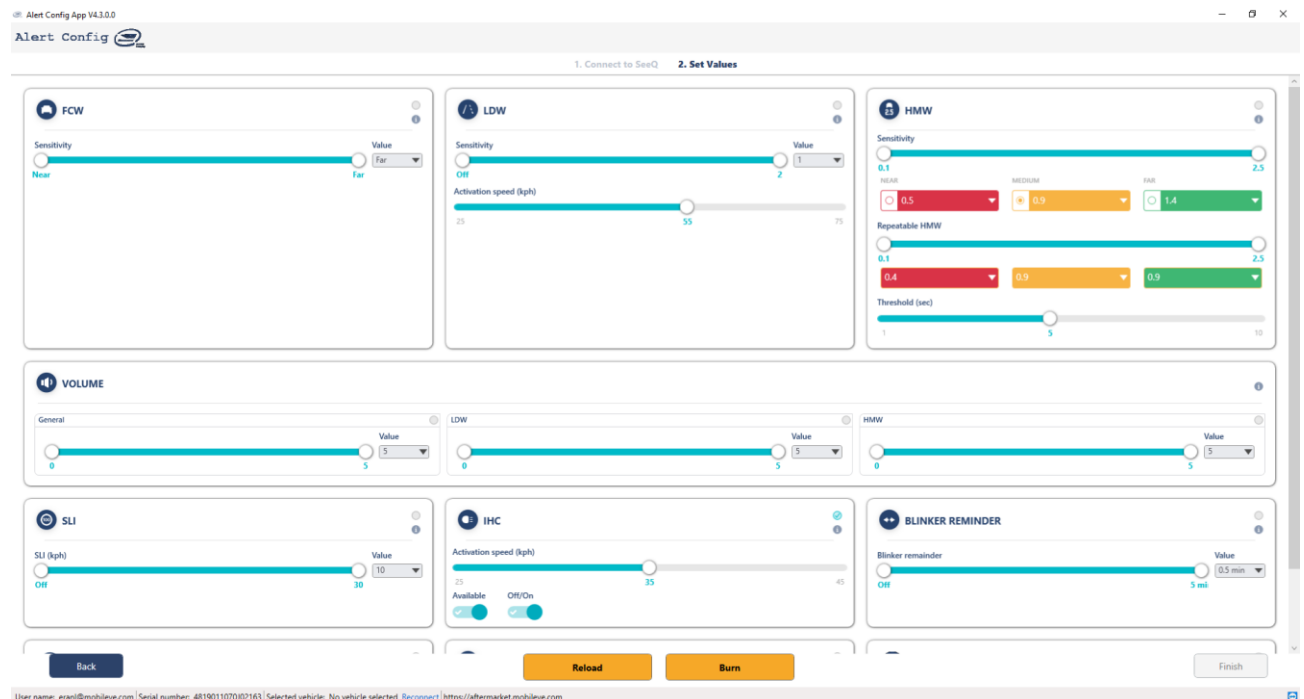
For each feature, a round question mark  can be found in the top right corner. By hovering over the icon, a dialog box will pop up with basic information and instructions.

For each feature, a round circle checkbox  can be found in the top right corner to indicate if a change has been made .

Upon completion of the desired configuration, click the  button to save and burn the new changes to the system.

Click the  button to read and display the current settings of the system.

A system power is mandatory for the changes to take effect.



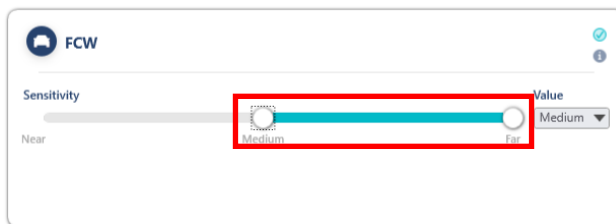
3.1 FCW



- ① Move the scroll bar and choose to limit the FCW sensitivity level.

This will limit the user's ability to adjust the sensitivity level within the chosen range.

Example:



Limit the sensitivity level between Medium to Far will allow the user to change the sensitivity level only between these ranges and not to Near sensitivity level.

- ② The "Value" drop-down will display the default value which currently exists in the system.

To change this value, open the drop-down and choose the desired value.



3.2 LDW



- ① Move the scroll bar to limit the LDW sensitivity level. The 3 levels of sensitivity are:
 - Level 0 = feature is disable
 - Level 1 = feature is active
 - Level 2 = feature is active at the highest sensitivity level
 - By setting both min & max to the same value, LDW feature will be set to this specific sensitivity level.
 - Setting different values for min & max, will create a range and allow the user to change the LDW sensitivity level within this range only.
- ② Move the scroll bar to choose the LDW activation speed.
- ③ The "Value" drop-down will display the default LDW sensitivity level which currently exists in the system. To change this value, open the drop-down and choose the desired value.

3.3 HMW



- ① Move the scroll bar to limit the HMW sensitivity level to a desired range.
 - By setting both min & max to the same value, HMW feature will be set to this specific timing.
 - Setting different values for min & max, will create a range and allow the user to change the HMW within this range only.

HMW Sensitivity level is measured in seconds and is available between 0.1 second up-to 2.5 seconds.

- ② By default, the existing HMW default value range will be checked. To change the default value, click the desired checkbox.

③ Reapable-HMW

Move the scroll bar to limit the R-HMW sensitivity level to a desired range.

- By setting both min & max to the same value, R-HMW feature will be set to this specific timing.

- Setting different values for min & max, will create a range and allow the user to change the R-HMW within this range only.

R-HMW Sensitivity level is measured in seconds and is available between 0.1 second up-to 2.5 seconds.

④ By default, the existing R-HMW default value range will be checked. To change the default value, click the desired checkbox.

⑤ Move the scroll bar and choose the R-HMW threshold level to a desired range.

R-HMW threshold level is measured in seconds and is available between 1 second, 5 seconds & 10 seconds.

NOTE →

When configure R-HMW in a system with FW older than 4.19.6 5.x, the new settings will take effect ONLY upon completion of OTA!

3.4 Volume

3.4.1 General volume level



- By setting both min & max volume levels to the same value, the general volume level of the system will be set to this specific level and cannot be changed. Locking this value to 0 will mute the system (critical alerts such as FCW, UFCW and PCW will still provide an audio alert at volume level 3).
- By setting different values for min & max, will create a range and limit the user to change the volume level within this range only.
- To change the default volume level, open the drop-down menu and choose the desired general volume level. In case the default level is set less than 3, the critical alerts as mentioned above will still provide an audio alert at least at level 3.

3.4.2 LDW volume level



- By setting both min & max LDW volume level to the same value, LDW audio alert will be set to this specific volume level and cannot be changed.
Setting both values to 0 will mute the LDW volume alert (a visual alert will still be shown on the EyeWatch display unit).
- By setting different values for min & max, will create a range and limit the user to change the LDW volume level within this range only.
- To change the default LDW volume level, open the drop-down menu and choose the desired volume level.

3.4.3 HMW volume level



- By setting both min & max HMW volume level to the same value, HMW audio alert will be set to this specific volume level and cannot be changed.
- By setting different values for min & max HMW volume level, will create a range and limit the user to change the LDW volume level within this range only.
- To change the default HMW volume level, open the drop-down menu and choose the desired volume level.

3.5 Speed Indication

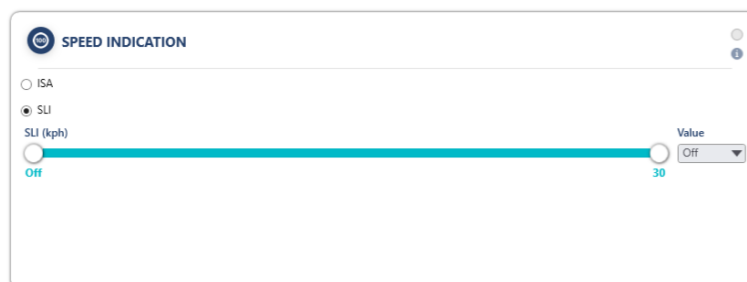


- ① Move the scroll bar and choose to limit the SLI speed activation level to a desired range.
 - By setting both min & max to the same value, SLI feature will be set to this specific activation speed.
 - By setting different values for min & max, will create a range and limit the user to change the SLI within this range only.

SLI speed activation level is measured in Units and is available between 0-30 (km/h or MPH). 0 = Off, 1= at Speed sign, 5 and up = numerical unit above the allowed Speed sign)

- ② By default, SLI is disable. Open the drop-down to change the default value. Changing the default value is also available via the EyeWatch display unit.

In a case your unit firmware supports the ISA regulation, you will need to select whether the Speed Indication will be set ISA or unregulated SLI.

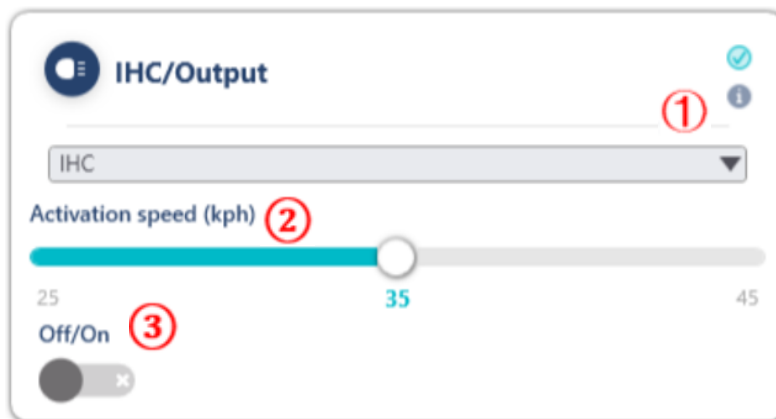


3.6 IHC/Output

The IHC output wire can be used for other applications other than for the IHC feature (supported only from ME8 FW ver8.5.x and up).

To enable the IHC output wire to trigger 3rd party devices/applications, please review [section 3.6.2](#) for more information.

3.6.1 IHC – Intelligent High Beam Control



- 1 Choose from the dropdown menu the IHC!



- 2 Move the scroll bar and choose the IHC activation speed.
IHC activation speed is available at 25km/h, 35km/h, or 45km/h
- 3 Turn on to activate the IHC feature. This option is also available to the driver using the advanced menu in the EyeWatch display unit.

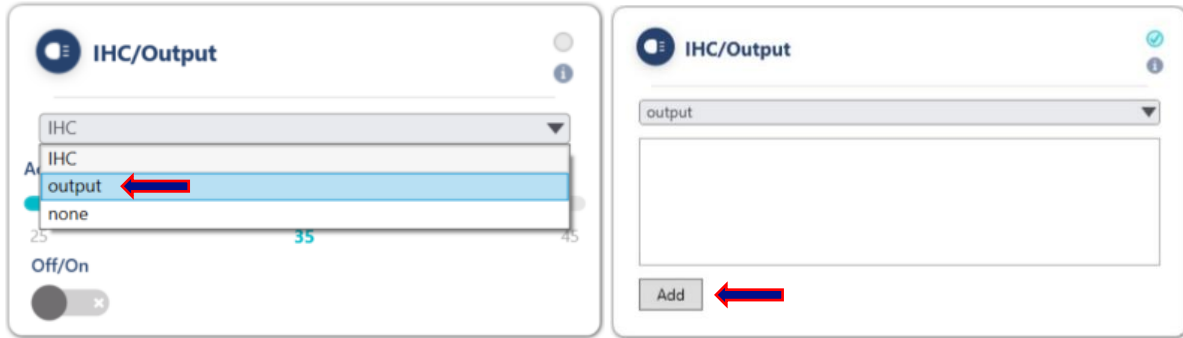


NOTE →

IHC (Intelligent High-Beam Control) feature requires a physical connection to be performed during the installation process. For more information about IHC connection step, check the IHC manual which can be found at [Mobileye website](#).

3.6.2 Output – analog output

When choosing the “Output” option, click the “Add” button!



Configure the output alert according to the below options which will affect the output behavior.

IHC Output Alert ✕

① Warning

Type ②

③ Duration ms

On ms

Off ms

Warning – choose the relevant warning which will be used to trigger the analog output.

①

IHC Output Alert ✕

Warning

Type

Duration ms

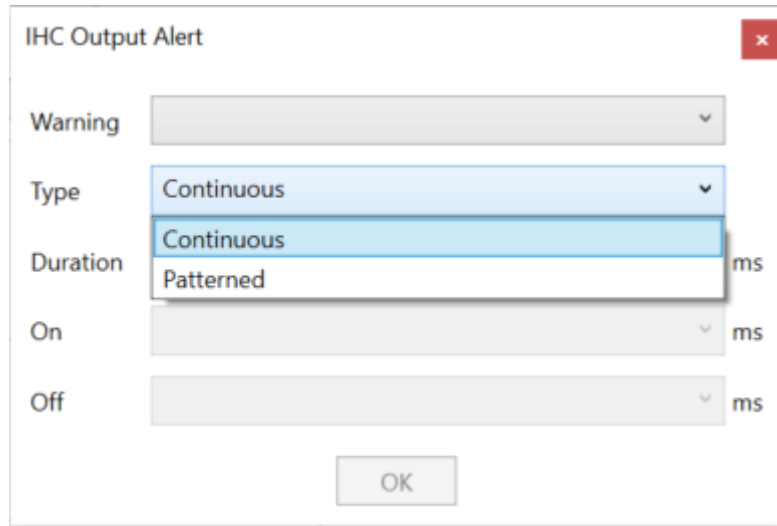
On ms

Off ms

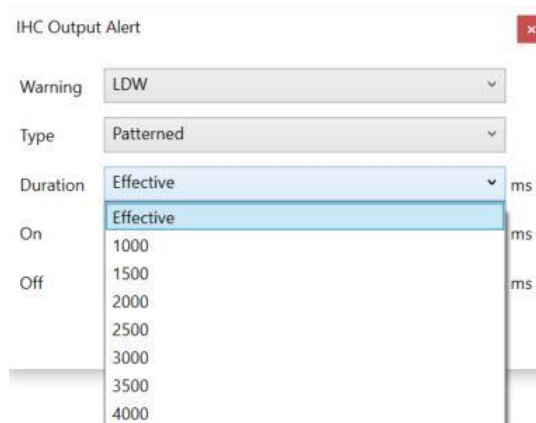
② Choose the output alert type.

Continuous - the output will be active for as long as the alert is active (that means that all other options; duration, on and off will be disabled as they are not relevant).

Patterned – the output can be configured according to the customer`s requirements.



③ **Duration** – set the duration of the alert to be active.



Effective – the output will be active as long as the alert active.

Or

Choose to limit the output duration by choosing any of the time options in the dropdown list.

The pattern duration value is in milliseconds.

④ On – Set the duration of the “On” value.

IHC Output Alert

Warning: LDW

Type: Patterned

Duration: Effective ms

On: [dropdown menu open]

Off: [dropdown menu closed]

300 ms

500 ms

1000 ms

1500 ms

2000 ms

⑤ Off – set the duration of the “Off” value.

IHC Output Alert

Warning: LDW

Type: Patterned

Duration: Effective ms

On: 300 ms

Off: [dropdown menu open]

300 ms

500 ms

1000 ms

1500 ms

2000 ms

Once completed and all configuration were set, click “Ok” to save all the changes

Up to 3 different Warnings can be configured on the Output.

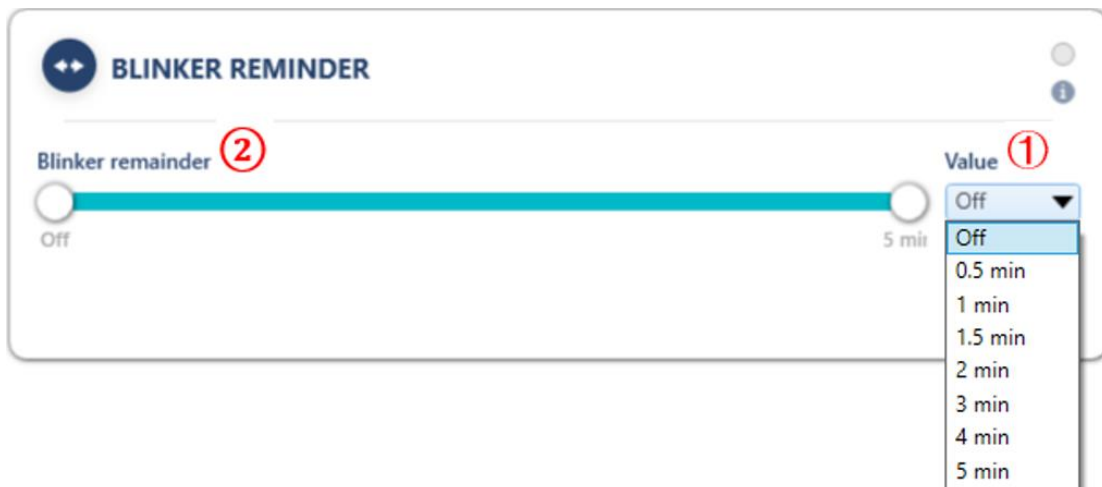
To configure additional Warnings, repeat section 3.6.2 above.

3.7 Blinker Reminder



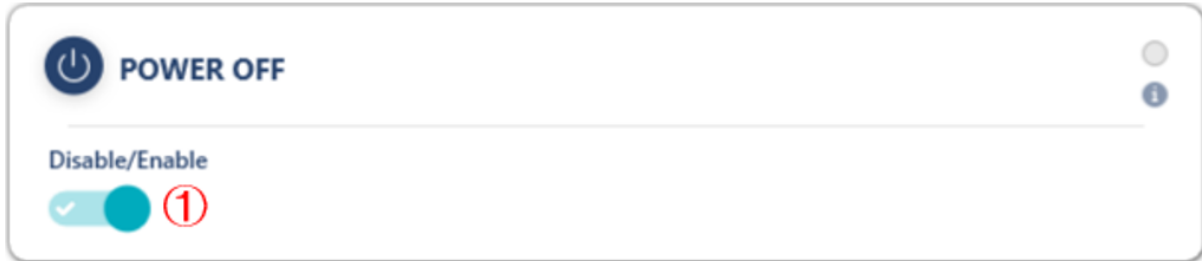
- ① By default, BR is set to disable (off). BR activation time can be set to the following values: off, 0.5sec, 1min, 1.5min, 2min, 3min, 4min and 5min.

Choose the default value from the BR value dropdown!



- ② Move the scroll bar and choose to limit the Blinker Reminder (BR) activation time to a desired range.
- By setting both min & max to the same value, BR feature will be set to this specific activation timing and cannot be changed.
 - Setting different values for min & max, will create a range and limit the user to change the BR within this range only.

3.8 System on/off



- ① By default, the system can be turned off by the driver (enabled mode).
Turn off to lock the power button and disable the option to turn off the system by the driver.



3.9 Pilot mode



- ① turn on to activate the pilot mode.



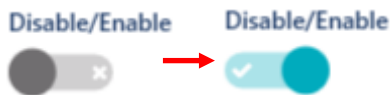
Pilot mode will disable all visual and audio alerts.

Usually used for new project for assessment and analyzing.

3.10 Mute by AUX – police mode



- ① Enable to activate the police mode.



Police mode will mute all audio alerts when triggered (except for critical collision warnings)

3.11 Virtual Bumper



- ① By default, Virtual Bumper is set to 1.4. Virtual Bumper alerting distance can be set to the following values: 0, 1, 1.2, 1.4, 1.6, 1.8, 2, 2.5, 3, 3.5 and 4 (units are in meters).

Choose the default value from the Virtual Bumper value dropdown



Move the scroll bar and choose to limit the Virtual Bumper alerting distance to a desired range.

- By setting both min & max to the same value, Virtual Bumper feature will be set to this specific alerting distance and cannot be changed.

Setting different values for min & max, will create a range and limit the user to change the Virtual Bumper within this range only.

3.12 Vehicle Information

When running the Alerts Configuration app for installed units, the vehicle information selection is required to be filled.

Please Note: changing alerts configuration without the "Vehicle Information" cannot be completed (the "Burn" button will not be available).

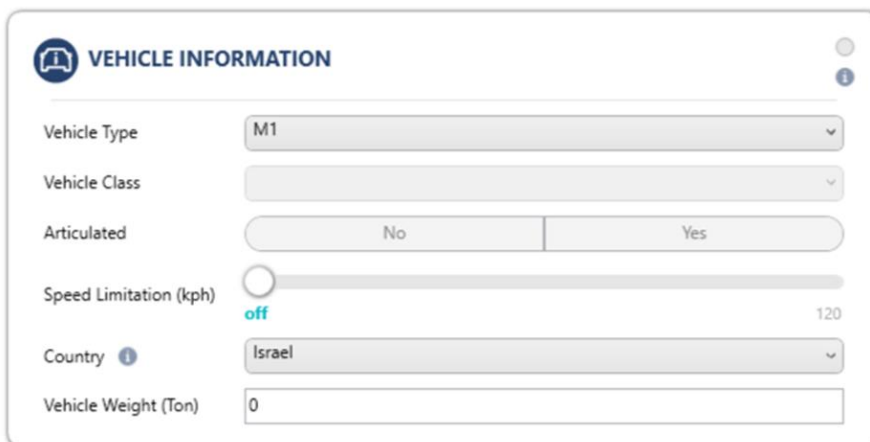
1. Select the vehicle category- the vehicle category can be found in the vehicle license documentation.

A Full description of the vehicle categories and information are available at https://en.wikipedia.org/wiki/Vehicle_category

2. According to the vehicle Type selection, you may require choosing additional information such as Vehicle Class and select whether the vehicle is articulated or not.

2.1 Vehicle **class** and **articulated** will be required only for some categories (for example: M3)

3. If the vehicle has a Max speed limitation by regulation - drag the slide bar to the speed limitation value.
4. Choose the driving country.
5. Insert the vehicle weight.



The screenshot displays the "VEHICLE INFORMATION" configuration screen. It features the following fields and controls:

- Vehicle Type:** A dropdown menu with "M1" selected.
- Vehicle Class:** A dropdown menu.
- Articulated:** A toggle switch with "No" selected.
- Speed Limitation (kph):** A slider control with a knob at the "off" position and a maximum value of 120.
- Country:** A dropdown menu with "Israel" selected.
- Vehicle Weight (Ton):** A text input field containing "0".